

2016 State Fair Photography Judging

Class 1 Black & White



1



2



3



4

Select class

Class 1 – black & white

Class 2 – wheat

Class 3 – frozen

Class 4 – turtles

Class 5 – sports

Class 6 – sunflowers

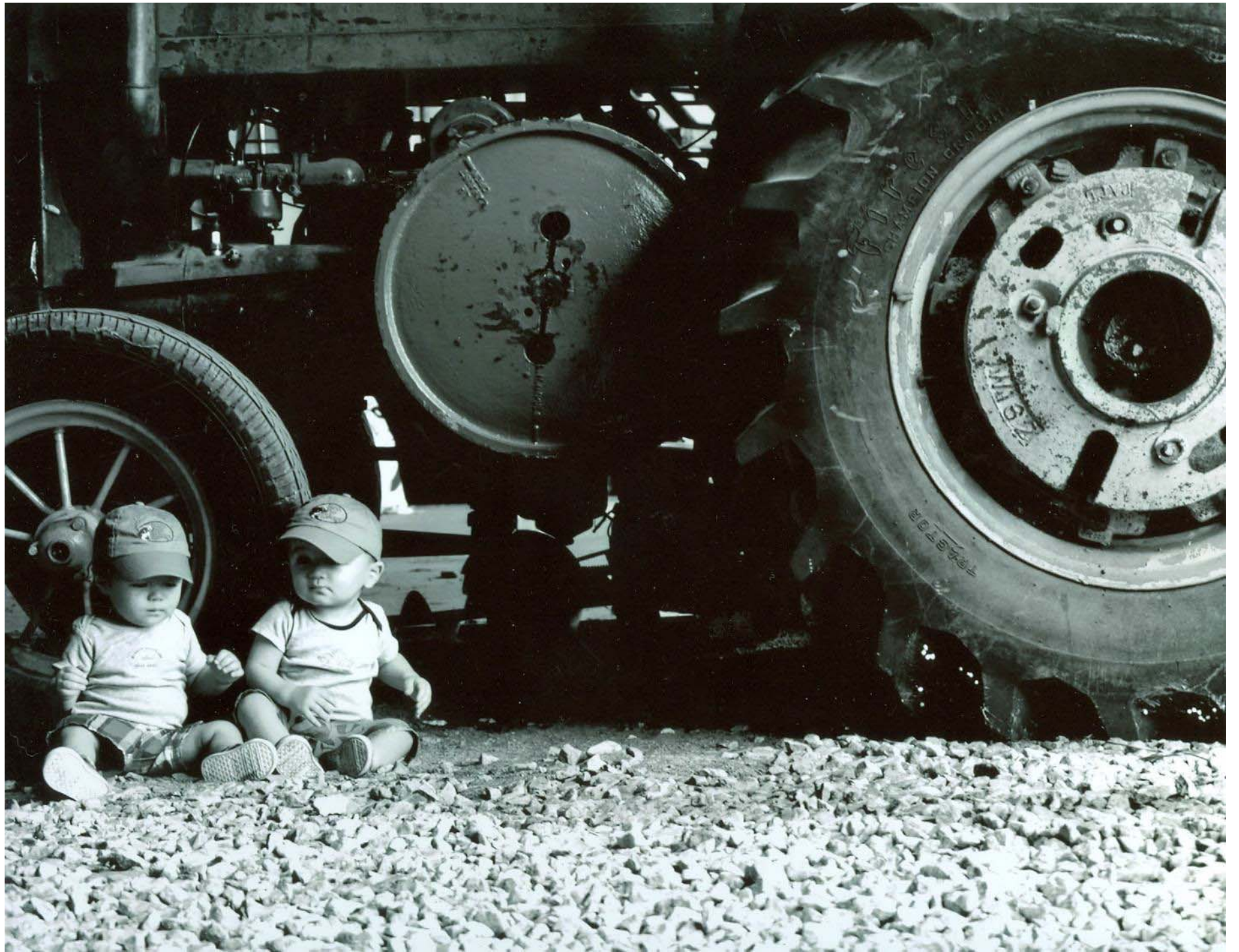
Intermediate Problem

Senior Problem

Place this class of four photos in order of best to worst. Click on a photo for a full screen view, click on the large image to return to this page. Write your placing down on paper then **click the button to see official placing and reasons**









Class 1 – Black & White

Placing 4 – 1 – 3 – 2 .

v v v

Cuts 3 3 4 .



#4

Fills the frame
Good focus
Strong subject
Good highlights in eyes
Right side overexposed

#1

Good lines
Good range of tones
Fills the frame
Bright window distracts
Good focus even if face
is soft focus

#3

Good contrast
Good focus
Pretty good range of
tones
Weak subject: tire or kids
Too much foreground

#2

Good range of tones
Centered
Distracting background
Edge mergers

2016 State Fair Photography Judging

Class 2 Wheat



1

2

3

4

Select class

Class 1 – black & white

Class 2 – wheat

Class 3 – frozen

Class 4 – turtles

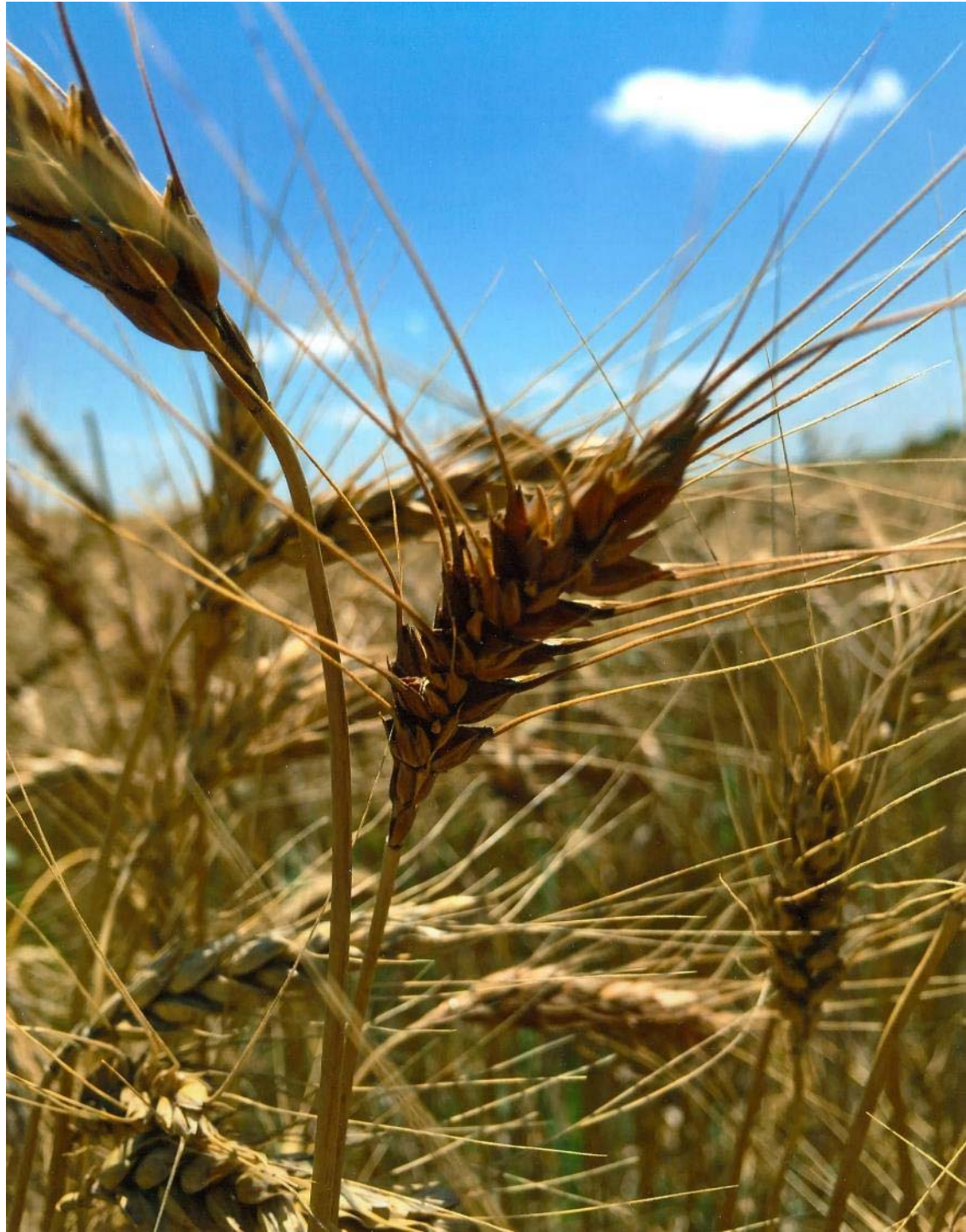
Class 5 – sports

Class 6 – sunflowers

Intermediate Problem

Senior Problem

Place this class of four photos in order of best to worst. Click on a photo for a full screen view, click on the large image to return to this page. Write your placing down on paper then **click the button to see official placing and reasons**







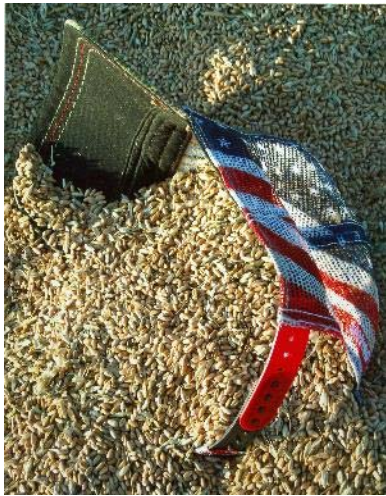


Class 2 - Wheat

Placing 3 – 2 – 4 – 1 .

v v v

Cuts 3 2 5 .



#3

Great lighting
Good focus
Fills the frame
Great composition

#2

Great color
Good focus &
perspective
Fills the frame
Tallest stalk too centered
Borders on being busy
Edge mergers

#4

Good color
Focus is good
Nice lines
Horizon almost centered
Wheat blends into
background

#1

Strong subject
Horizon in the center
Edge mergers on main
subject
Out of focus

2016 State Fair Photography Judging

Class 3 Frozen



1

2

3

4

Select class

Class 1 – black & white

Class 2 – wheat

Class 3 – frozen

Class 4 – turtles

Class 5 – sports

Class 6 – sunflowers

Intermediate Problem

Senior Problem

Place this class of four photos in order of best to worst. Click on a photo for a full screen view, click on the large image to return to this page. Write your placing down on paper then **click the button to see official placing and reasons**









Class 3 - Frozen

Placing 1 – 2 – 3 – 4 .

v v v

Cuts 2 4 5 .



#1

Lighting is good
Background is blurred
Good color
Good focus
Nice lines

#2

Great lighting
Good focus
Color is good
Background is a little
distracting

#3

Good focus on subject
Not a strong subject
Doesn't fill the frame well
Too much negative space

#4

Not a strong subject
Leading lines lead to
where?
Horizon is centered

2016 State Fair Photography Judging

Class 4 Turtles



1

2

3

4

Select class

Class 1 – black & white

Class 2 – wheat

Class 3 – frozen

Class 4 – turtles

Class 5 – sports

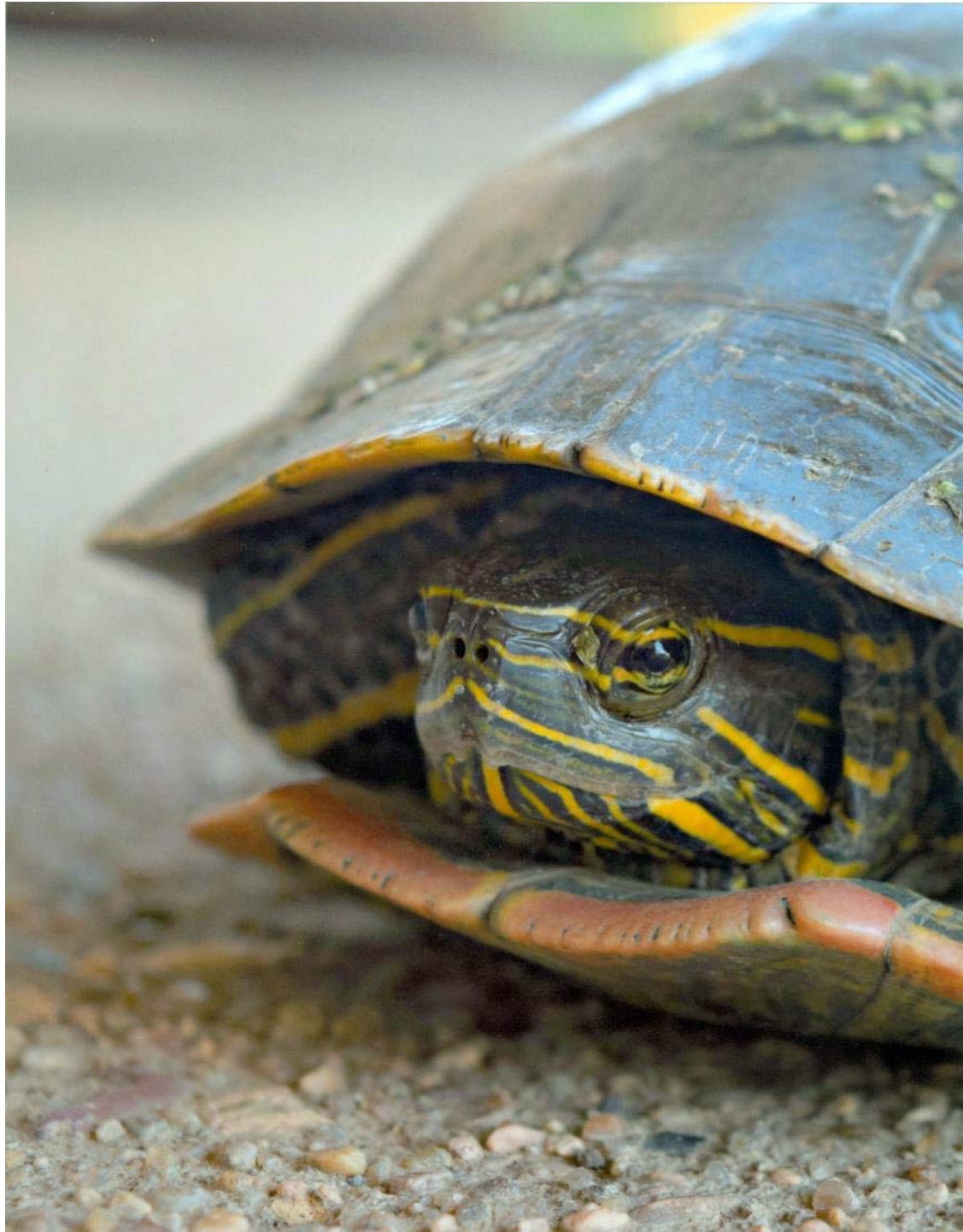
Class 6 – sunflowers

Intermediate Problem

Senior Problem

Place this class of four photos in order of best to worst. Click on a photo for a full screen view, click on the large image to return to this page. Write your placing down on paper then **click the button to see official placing and reasons**









Class 4 - Turtles

Placing 2 – 1 – 3 – 4 .

v v v

Cuts 3 3 5 .



#2

Great framework
Great angle
Good focus
Good color
Little more depth of field

#1

Strong subject
Eye focus is good with highlights
Negative space on right side
Need more light on face
More depth of field

#3

Good color
Nice lighting
Light in the eye
Does not fill the frame
Centered

#4

Good lighting & focus
Nice color
Does not fill the frame
Busy background & mergers
Too much foreground
Looking out of frame

2016 State Fair Photography Judging

Class 5 Sports



1



2



3



4

Select class

Class 1 – black & white

Class 2 – wheat

Class 3 – frozen

Class 4 – turtles

Class 5 – sports

Class 6 – sunflowers

Intermediate Problem

Senior Problem

Place this class of four photos in order of best to worst. Click on a photo for a full screen view, click on the large image to return to this page. Write your placing down on paper then **click the button to see official placing and reasons**









Class 5 - Sports

Placing 4 – 3 – 2 – 1 .

v v v

Cuts 3 3 5 .



#4

Good color & lighting
Good lines & expressions
Fills the frame
Great interaction

#3

Stopped the motion
Good lighting & color
Subject has room to move
Could crop a little tighter

#2

Nice color
Space to run
Good focus
Better in vertical picture
Helmet blends in background

#1

Good color
Good action
Edge mergers
Tends to be dark
Busy background

2016 State Fair Photography Judging

Class 6 Sunflowers



1

2

3

4

Select class

Class 1 – black & white

Class 2 – wheat

Class 3 – frozen

Class 4 – turtles

Class 5 – sports

Class 6 – sunflowers

Intermediate Problem

Senior Problem

Place this class of four photos in order of best to worst. Click on a photo for a full screen view, click on the large image to return to this page. Write your placing down on paper then **click the button to see official placing and reasons**









Class 6 - Sunflowers

Placing 3 – 2 – 1 – 4 .

v v v

Cuts 3 3 6 .



#3

Good color
Good lined
Focus is good
Good Composition
Negative space upper left

#2

Great focus
Rule of thirds
Full flower
Background color is off
Negative space on the left side

#1

Good color
Good focus
Background distracts
Cropped tighter

#4

Good color
Horizon centered
No focal point
Basically 2 subjects
Not a strong subject

2016 State Fair Photography Judging

Intermediate Problem



1

2

3

4

Select class

Class 1 – black & white

Class 2 – wheat

Class 3 – frozen

Class 4 – turtles

Class 5 – sports

Class 6 – sunflowers

Intermediate Problem

Senior Problem

Choose the photo that fits the settings in each camera mode.



Click on a photo for a full screen view, click on the large image to return to this page. Write your placing down on paper then **click the button to see official placing and reasons**









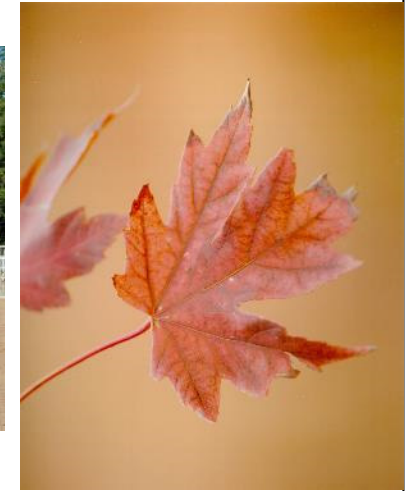
Intermediate Problem

Placing 2 – 1 – 4 – 3 .

1 correct = 13 points

2 correct = 25 points

4 correct = 50 points



#2



Night portrait mode
Exposure settings to capture existing light and flash for close objects

#1



Landscape / scenic mode
Priority to aperture setting for large depth of field

#4



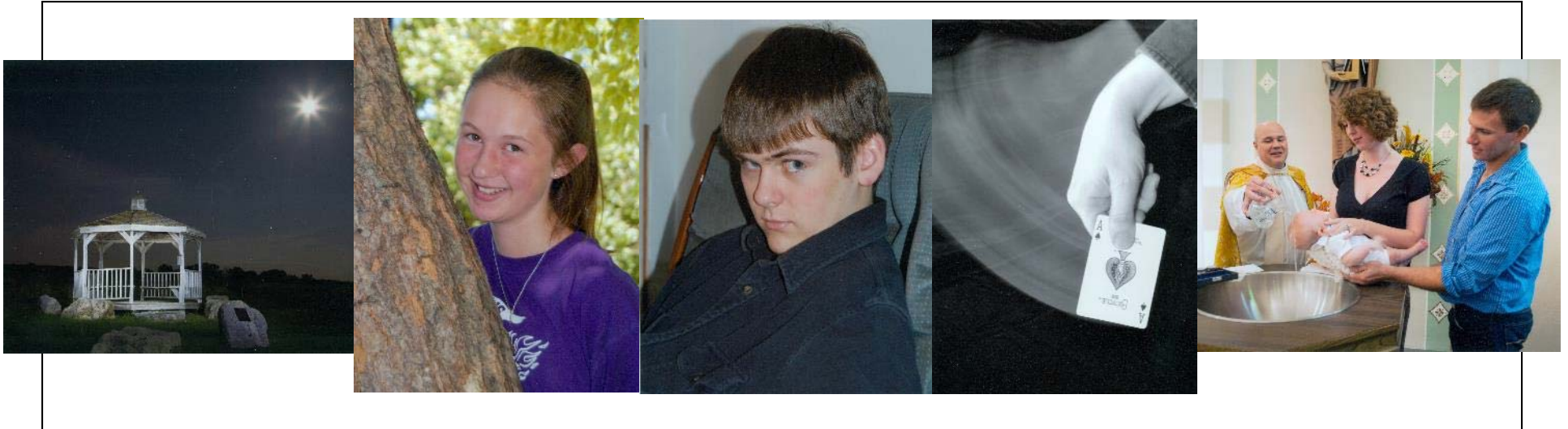
Sports mode
Priority to shutter speed to stop action

#3



Close up / Macro
For focusing on smaller subjects up close

2016 State Fair Photography Judging Senior Problem



1

2

3

4

5

Select class

Class 1 – black & white

Class 2 – wheat

Class 3 – frozen

Class 4 – turtles

Class 5 – sports

Class 6 – sunflowers

Intermediate Problem

Senior Problem

Using add on light

Select the photo that best shows the type of light or technique for the given description.

A. Fill Light

B. Rear (second) curtain sync

C. Light painting

D. Auto Flash

Click on a photo for a full screen view, click on the large image to return to this page. Write your placing down on paper then **click the button to see official placing and reasons**











Senior Problem

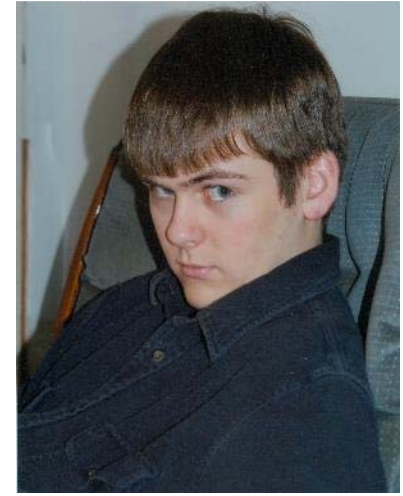
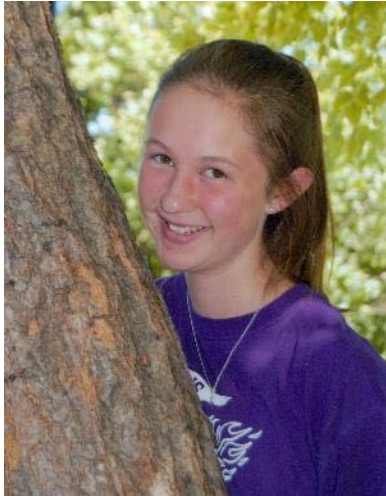
Placing 2 – 4 – 1 – 3 .

1 correct = 13 points

2 correct = 25 points

3 correct = 38 points

4 correct = 50 points



#2

Fill Light

Light added to lighten shadows on face

#4

Rear (second) curtain sync

Flash fires at the end of a long exposure

#1

Light painting

Illuminate subject with a light source to make it stand out from a dark background/foreground

#3

Auto Flash

Using on camera flash creates distinct shadows